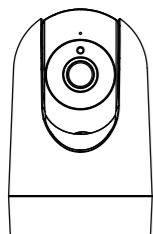


## Quick Setup Guide

Indoor Wi-Fi Live Streaming Camera



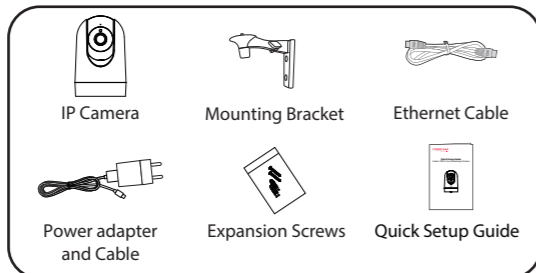
To view this guide in other languages (e.g. Español, Français, Deutsch, Nederlands), and for detailed manuals, tools, etc., please visit [foscam.com/downloads](https://foscam.com/downloads).

V2.0  
305503001235

## Setting Up Your Foscam Security Camera

### 1. Getting Started

#### ■ Package Contents



#### ■ Safety Tips

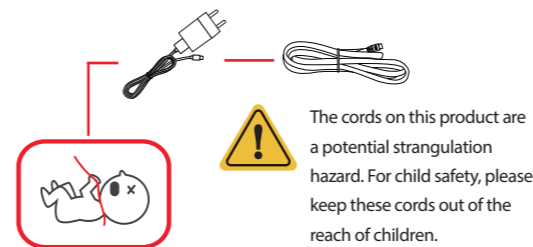
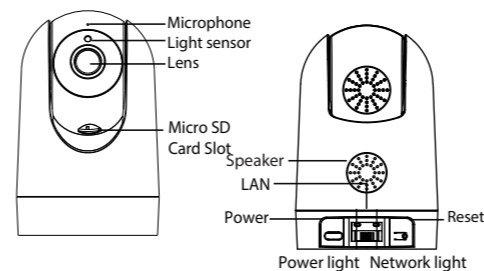
- Please change the camera's password regularly, using a combination of numbers, letters and special characters.
- We recommend that you regularly update your camera with the latest available software and firmware to ensure the best experience with your camera.

-2-

- Please ensure that the proper power supply is used before using the camera.
- Do not use the device where wireless devices are not allowed.
- For indoor use only.
- Do not disassemble, repair or modify the product.
- Do not use the product if the casing has been broken. Danger of electric shock.
- Please install the camera securely using the screws provided.
- Change your default port to a greater range to help ensure the safety of your connection.
- To avoid the risk of fire or electric shock, please keep your camera connectors in a cool, dry place.
- The camera produces heat during the operation. Please use the product only in an open and safe environment with sufficient air supply.
- Please keep the camera out of reach of small children.
- Please follow the local radio equipment regulations, when using the product.
- Operating Temperature: -20°C~ 40°C(-4°F~104°F).

-3-

### 2. Physical Description

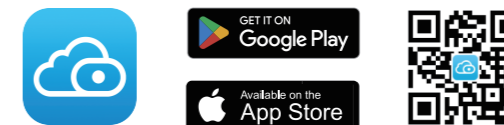


-4-

### 3. Setting Up Your Camera: Connection via the Foscam App (Recommended)

#### ■ Before You Get Started

Scan the QR code below to download and install the Foscam APP.



To ensure a smoother video experience on your smart phone, it is recommended that your smart phone meet the following specifications:

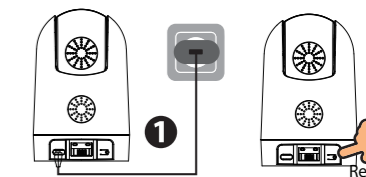
- iOS: version 12.1 or higher.
- Android: 6.0 or higher, using a device with a Graphics Processing Unit (GPU).

**Note:** For the best experience, please update the APP to the latest version!

-5-

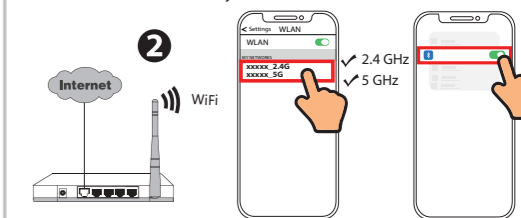
#### ■ WiFi connection

1. Plug the power adapter into the camera, and please wait for a few seconds until hearing the "Ready for WiFi configuration".



**Tips:** If you didn't hear the voice prompt, press and hold reset for about 3~5 seconds to reset the camera.

2. Make sure that your smartphone is connected to your WiFi router and turn on the system Bluetooth.



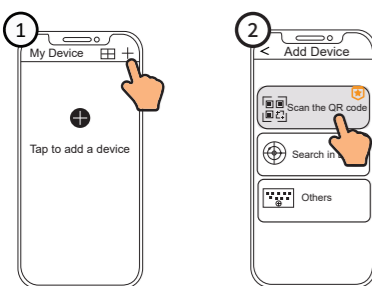
**Note:** Before connecting the camera via Bluetooth, ensure that the system's Bluetooth is turned on.

-6-

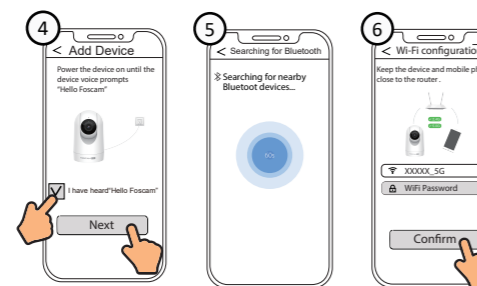
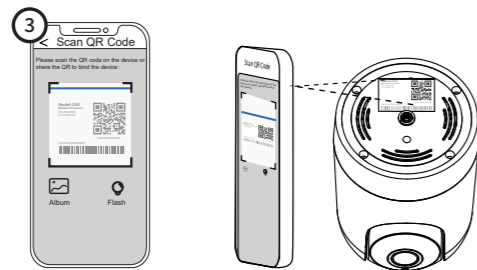
3. Open the Foscam APP and please sign up for a Foscam account, or sign in if you have one already.



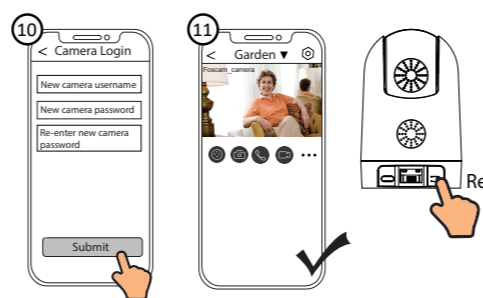
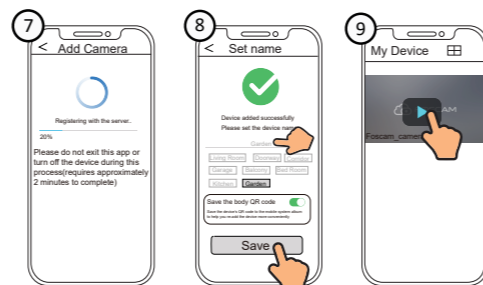
4. Follow the steps below:



-7-



-8-

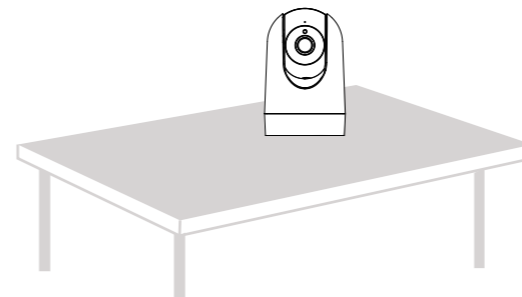


-9-

**Note:** If the process of adding a camera fails, please reset your camera and try adding again according to the above method.

### 4. Hardware Installation

- Place the camera directly on a desk.



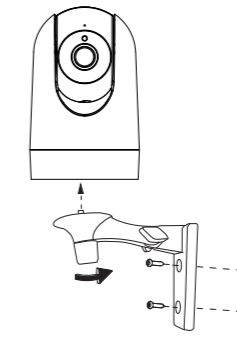
- Install the mount on a wall or ceiling with the supplied fixing screws.
  - ①. Screw the mount on the wall with the two screws provided.
  - ②. Loosen the thumb screws to adjust the mount to the desired position. Once the position is set, tighten the screws securely.

-10-

### 5. PC Access Your Camera

#### ■ Foscam VMS

Foscam VMS is a new tool for PCs. It does not require plug-ins and is compatible with Windows & Mac, supporting up to 64 cameras for Windows & 36 cameras for Mac at the same time. If you would like to manage multiple cameras, we suggest you install Foscam VMS. You can download the "Foscam VMS" Windows version from [foscam.com/vms](https://foscam.com/vms), and can download the "Foscam VMS" Mac version from the APP store: <https://apps.apple.com/cn/app/foscamvms/id1521202507?mt=12>

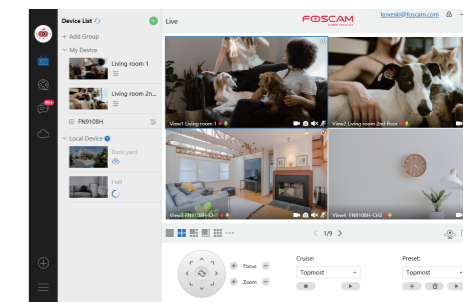


-11-

**Note:** For the best experience, please update Foscam VMS to the latest version!

#### Add the IP Camera

1. Run Foscam VMS, then create a local administrator account or a Foscam account and login.
  2. Tap the "+" icon on the Foscam VMS and follow the setup wizard to add your camera.
- Please visit [foscam.com/downloads](https://foscam.com/downloads) to view the user manual and for additional detailed steps.

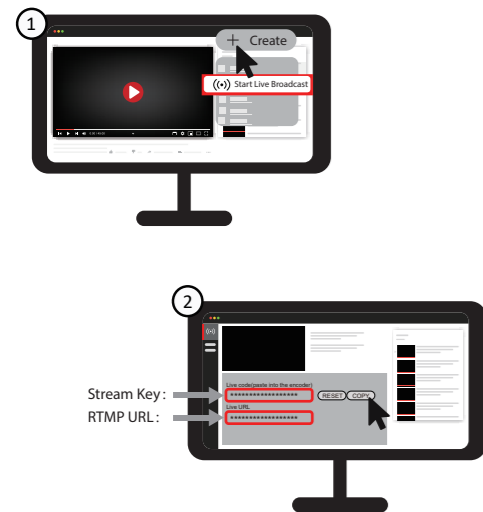


-12-

## 6. Live Broadcast Setting

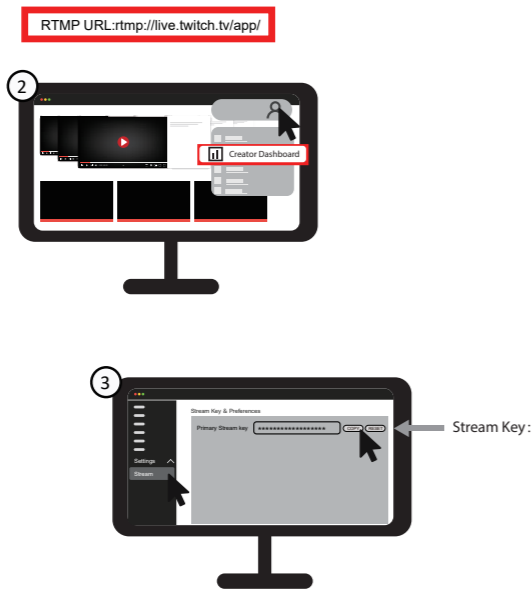
### Get RTMP URL & Stream Key

YouTube:



- 13 -

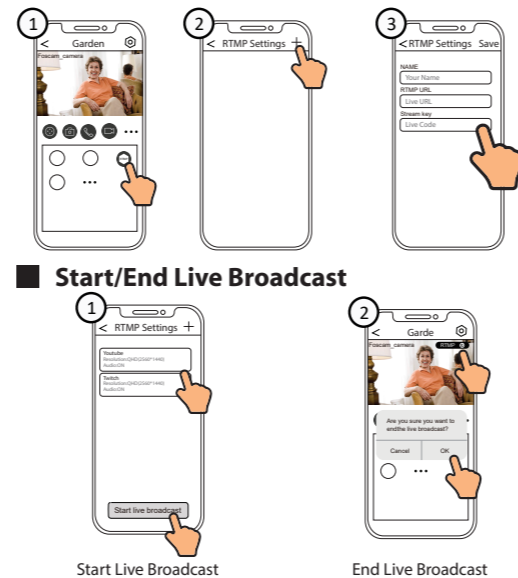
Twitch:



- 14 -

## APP live streaming settings

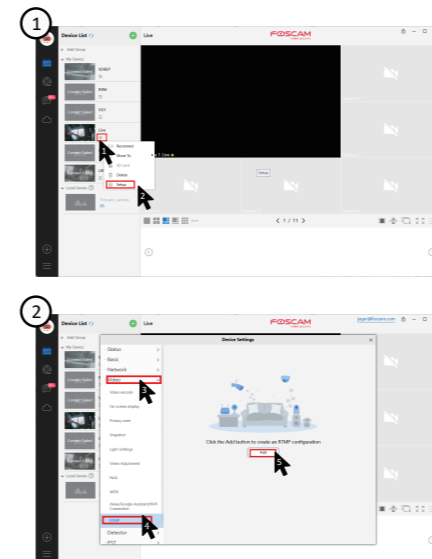
### Input RTMP URL & Stream Key



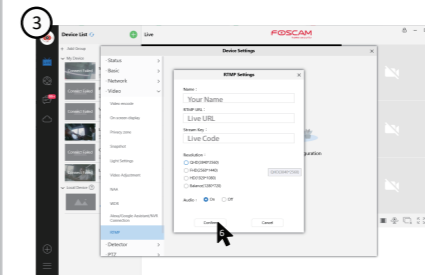
- 15 -

## VMS live streaming settings

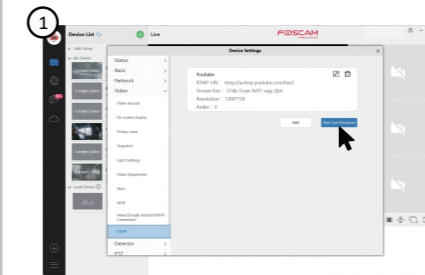
### Input RTMP URL & Stream Key



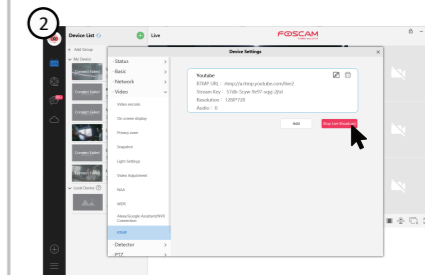
- 16 -



### Start/End Live Broadcast



- 17 -



End Live Broadcast

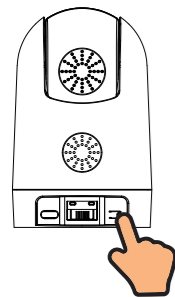
## 7. Important Notice

### Camera Username & Password

The camera username & password are used to access and manage your camera. Having a strong password can significantly improve the security of your camera.

If you have forgotten either of them, please press the "Reset" button.

- 18 -

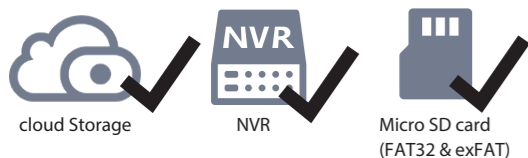


Press and hold the "Reset" button for 3-5 seconds until hearing "reset succeed".

Reset

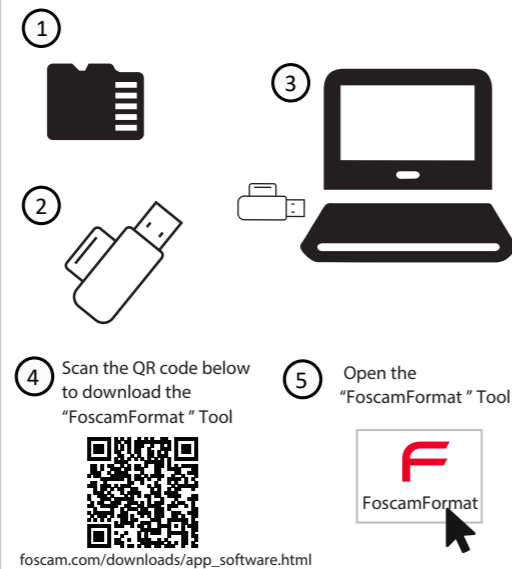
### Storage Media

Your camera supports cloud, NVR (Network Video Recorder), and Micro SD card (supports FAT32 and exFAT format) storage formats.

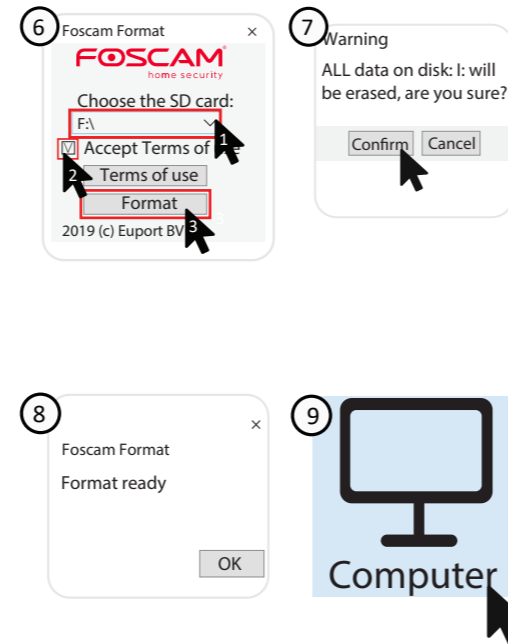


- 19 -

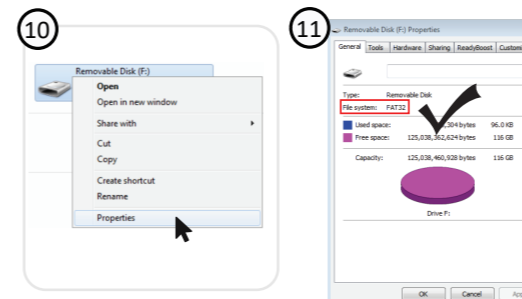
### How to format Micro SD card, please follow the steps below:



- 20 -



- 21 -



## 8. Product Performance

WLAN frequency range: 2400MHz - 2483.5MHz and 5725MHz - 5850MHz  
 Bluetooth Frequency Range: 2402-2480MHz  
 Maximum transmission power: < 18dBm  
 Wireless Standard: IEEE802.11a/b/g/n/ac/ax  
 Power Supply: DC 5V 2.0A 10W

- 22 -

## 9. Troubleshooting

### IP cameras is not powering on

If you find your camera is not powering on, please the following:

1. Please check whether the outlet is working properly or not. Try to plug the camera into a different outlet and see whether it will work.
2. Please check whether the DC adapter is working or not. If you have another 5V/2A power adapter which is working, please try with another power adapter and see whether it will work.
3. If it still won't work, please contact Foscam support.

### How to re-configure the WiFi connection for Foscam cameras after router changed?

1. Please connect the camera to your router with an ethernet cable. If you can see the camera live video on the Foscam app, please go to camera settings-->WiFi settings to choose the new WiFi name and input WiFi password to set up. After the WiFi settings is completed, please disconnect the ethernet cable from the camera and wait for some seconds to connect to the camera.
2. There is a need to reset the camera first. Please refer to <https://www.foscam.com/faqs/view.html?id=13> to see the reset steps. Then please open the Foscam app to scan the QR-code of your camera to set up the wireless connection for the camera. Please make sure your cellphone is connected to that new WiFi.

- 23 -



CE Certificate statement Website:

<https://www.foscam.com/company/ce-certificate.html>

Exporter and Importer Information Opened to Public:

<https://www.foscam.com/company/open-information.html>

Manufacturer: Shenzhen Foscam Intelligent Technology Co., Ltd  
 Addr: Room 902, Building 1B, Shenzhen International Innovation Valley, Xingke 1st Street, Nanshan District, Shenzhen, Guangdong, China, 518055

Support email: support@foscam.com



www.foscam.com

Due to from product upgrades and other reasons, this guide may be slow to update, resulting in slight inconsistencies with the official website information. Please take the official website (www.foscam.com) information as the current standard.